



Lake Park

Ice Fishing Houses

Chena Lake Recreation Area has four 8' x 12' custom ice fishing houses available for public use by reservation. They are equipped with woodstoves and are provided with a limited amount of firewood. All are situated within walking distance of the Lake Park parking lots. Please see attached map for individual locations.

Cost: \$30.00 per day

Reservations: Call 488-1655 or 459-1070

Reminders:

- Ice Houses are reserved from 9am—12am.
- Additional firewood is available at a cost of \$5.00 per bundle.
- Please leave the facility clean and orderly.
- The cutting of trees or brush is prohibited anywhere within the Park.
- Highway vehicles are permitted only in designated areas.
- Respect other Park users. Do not park snowmachines on the trail.
- The use of auxiliary heaters, flammable liquids or explosive gases is prohibited within these ice houses.
- All dogs must be kept on a leash.
- Do not attempt to move the ice houses.
- All local, State and Federal laws apply within the Park. A State of Alaska fishing license is required.
- Reservations must be made 24 hours in advance.

Provided by:

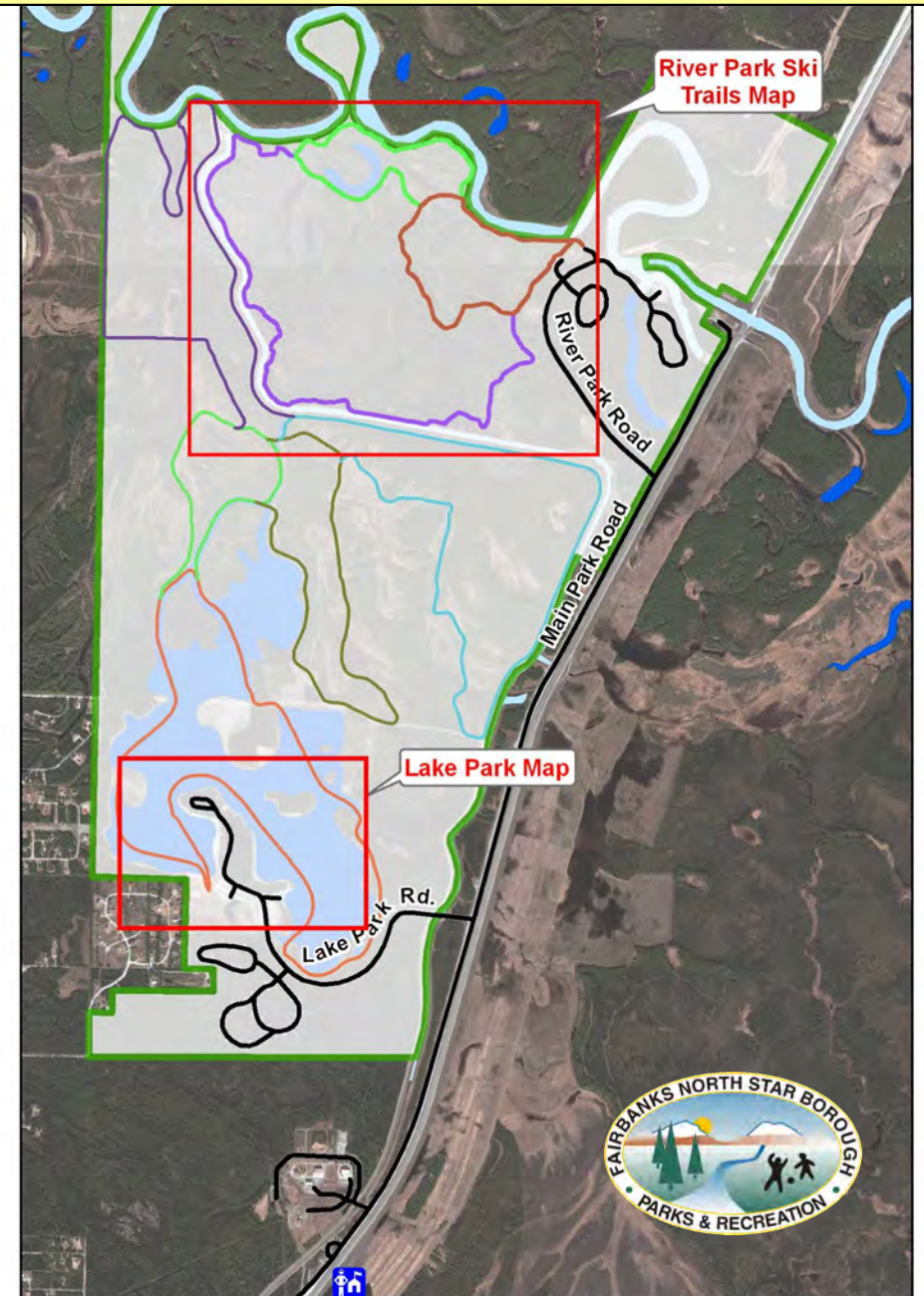
Fairbanks North Star Borough Department of Parks and Recreation

In cooperation with:

Alaska Department of Fish & Game

Chena Lake Recreation Area

Winter Trail Map and Guide



Mike Agbaba Trail System

12 Mile Loop

5.7 Mile Loop

9.5 Mile Loop

3.8 Mile Loop

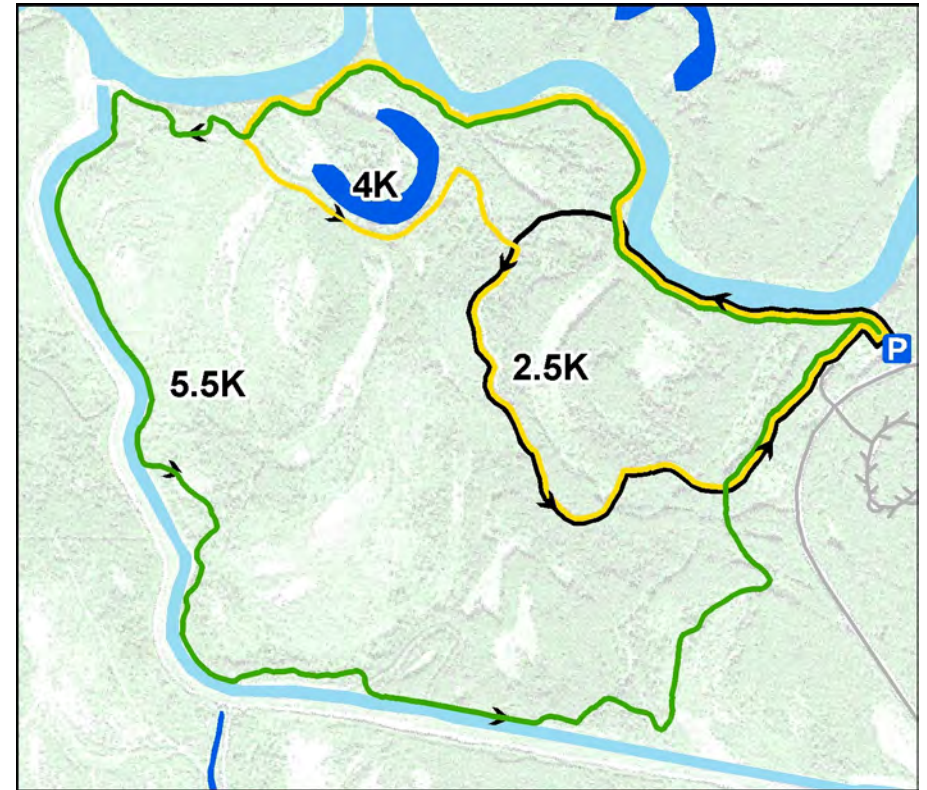
6.5 Mile Loop

Start/Finish

River Park Road

Main Park Road

Lake Park Rd.



River Park Ski Trails

River Park Cross Country Ski Trails

Choose from 7 kilometers of groomed, classical skiing trails nestled along the Chena River and the flood control collection channel. Please remember to be alert to the presence of wildlife on the trails. No dogs are allowed on the ski trails.

Mike Agbaba Trail System

12 miles of groomed, multiple-use trails along Chena Lake and surrounding park areas. Choose from the 3.8 mi, 5.1 mi, 6.5 mi, 9.5 mi or 12 mile loops for your activity. Trailhead is located at Lake Park near the children's playground equipment. Please be courteous to other trail users along the way.

